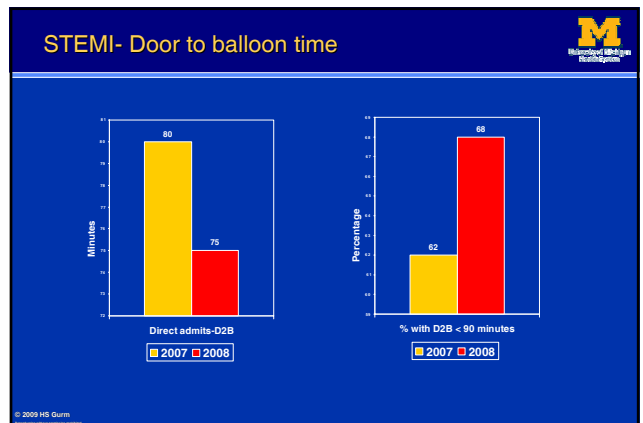
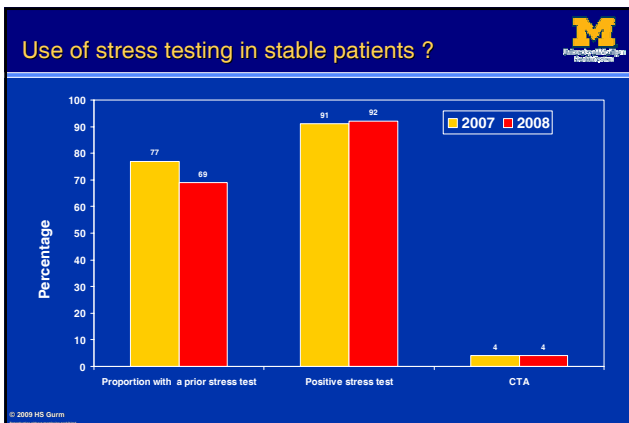
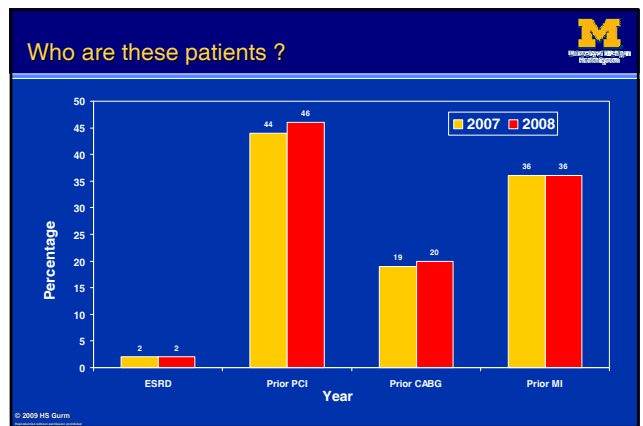
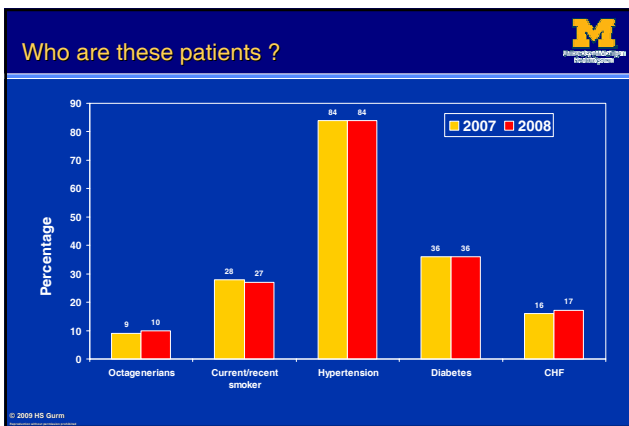
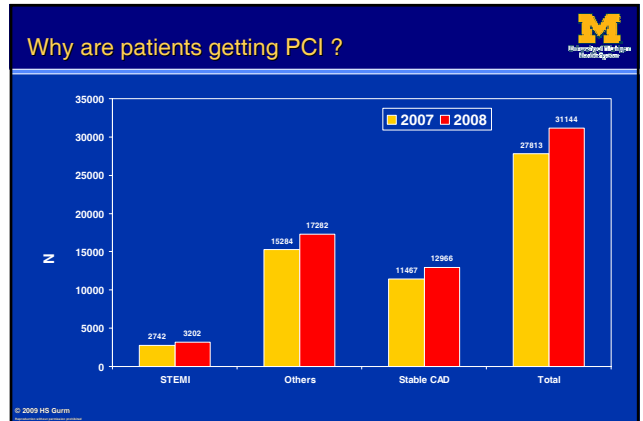


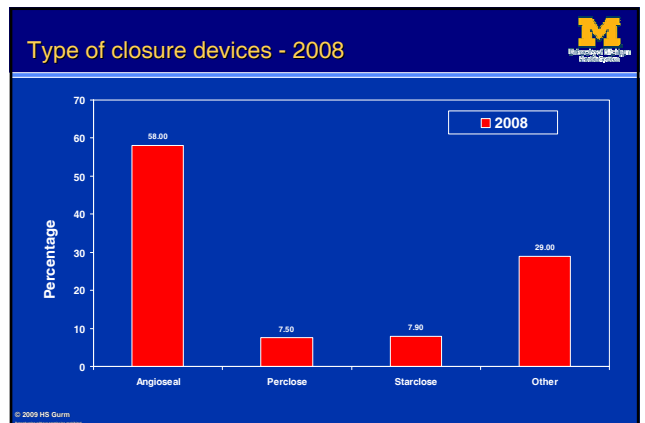
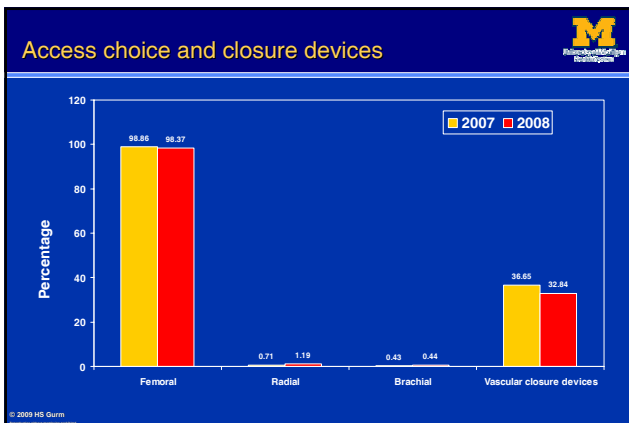
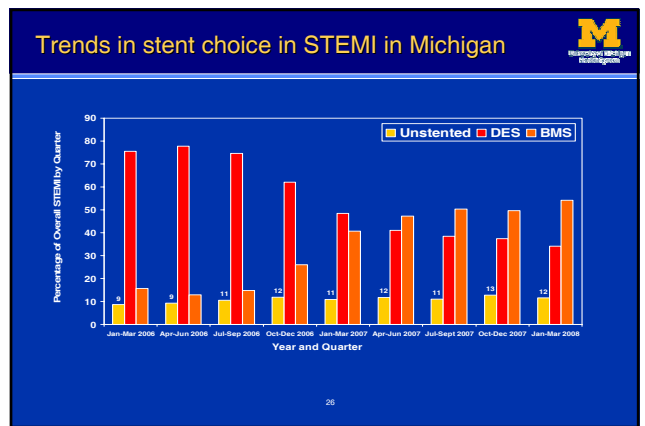
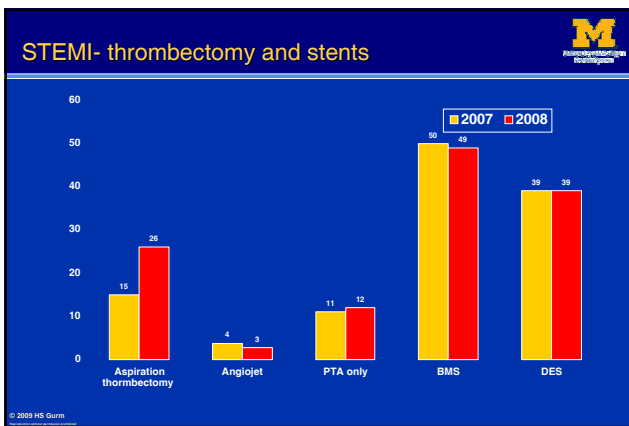
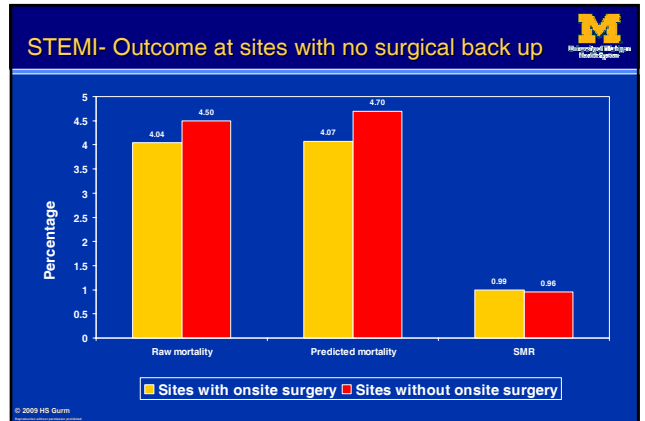
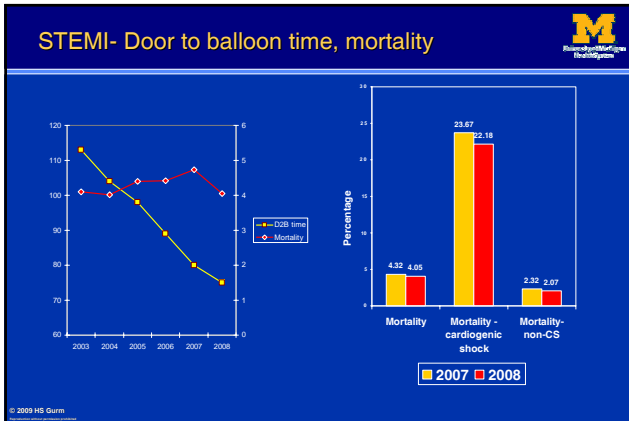
**M**  
Michigan Cardiovascular Consortium

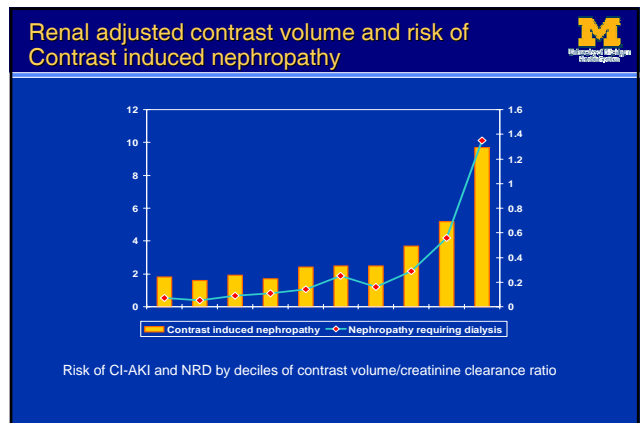
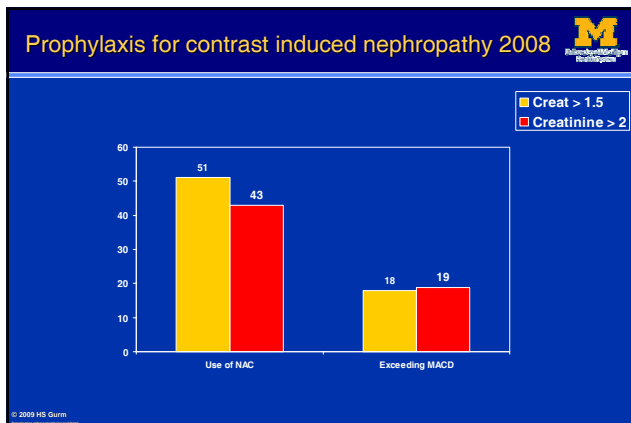
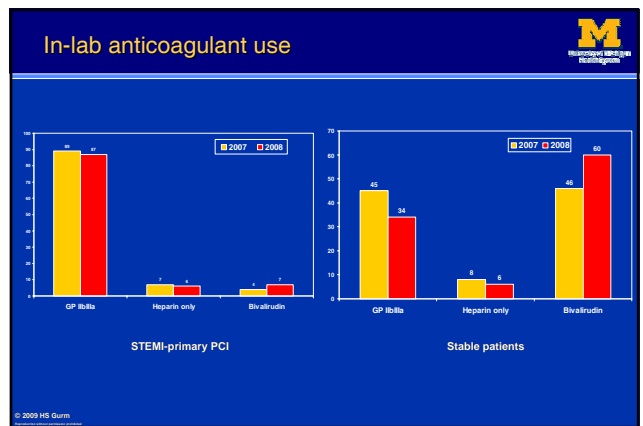
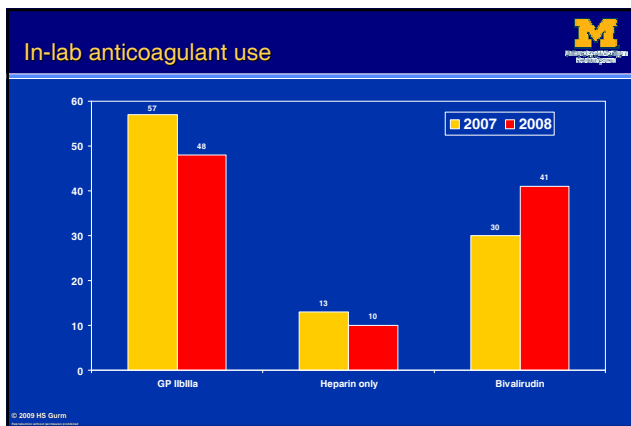
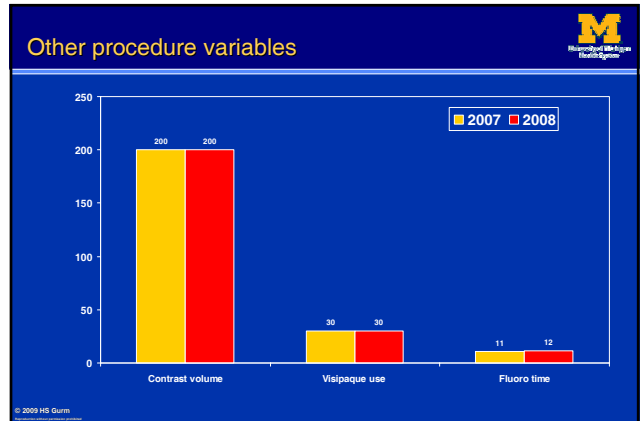
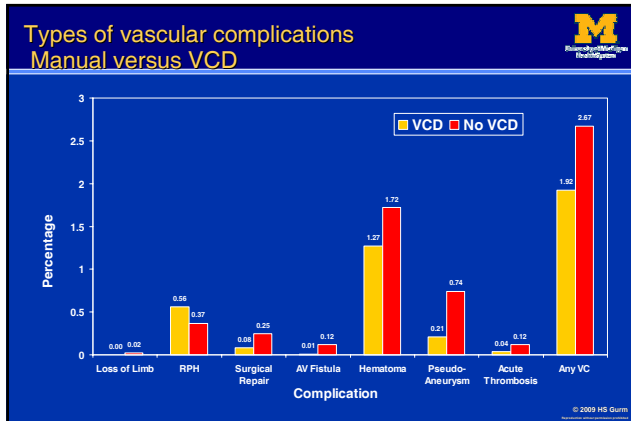
## Outcome of Contemporary PCI in Michigan: Insights from the Blue Cross Blue Shield of Michigan Cardiovascular Consortium (BMC2)

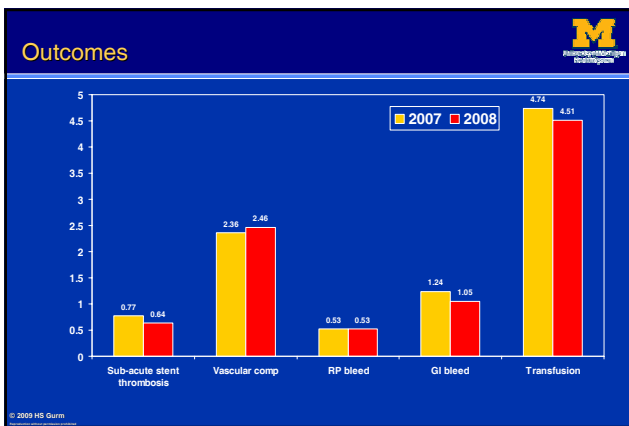
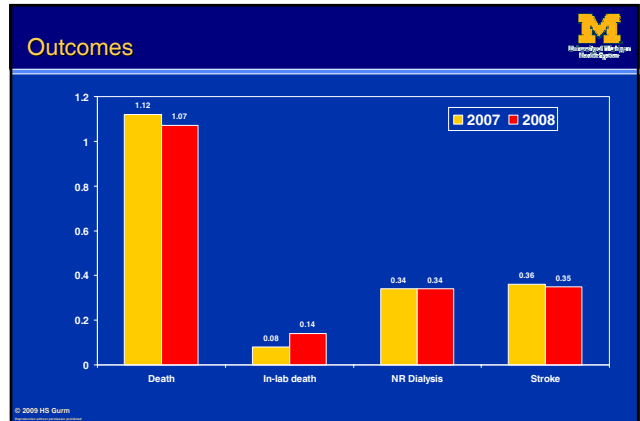
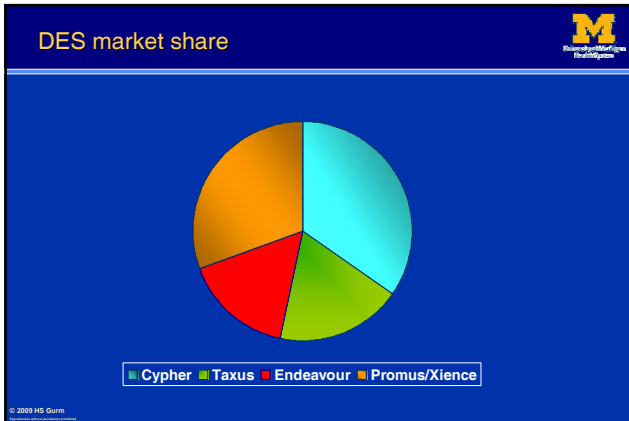
Hitinder S Gurm  
University of Michigan

© 2009 HS Gurm









- ### Where do we go from here?
- BMC2 QI initiative to drive down complications further
  - This year, numerical targets were established, reviewed and agreed by the Physician Advisory Committees
    - Vascular complications < 3%
    - Post PVI transfusion < 5%
    - Contrast induced nephropathy < 3%
    - Nephropathy requiring dialysis < .4%

- ### BMC2 Consortium Meeting
- April 23, 2010 – Campus Inn in AA
- Targeted to Interventional Teams and other BMC2 participants
  - Focus will be Interventional Best Practices, BMC2 QI Team Results (so far)
  - 8.30 am start time – 4.00 end time
  - **Mark your calendars – you are invited!**